



INTERCONTINENTAL®  
BARCELONA

MEETINGS & EVENTS



# INCREDIBLE OCCASIONS

## THE HOTEL

InterContinental Barcelona combines elegance and modern hospitality, defining the essence of luxury in the city. Located in Montjuïc, it offers the perfect setting to enjoy Barcelona's vibrant lifestyle and culture, with views of some of its most iconic spots.

All 273 bedrooms provide a stylish design in a relaxed atmosphere. The Presidential Suite found in the hotel's upper floors, offer our guests the most exclusive experience, while our Club InterContinental is the perfect spot to chill and enjoy a private urban retreat.



## MEETINGS & EVENTS

Host your next event at InterContinental Barcelona, featuring 22 flexible, soundproofed meeting rooms equipped with 5G technology. Many spaces offer natural daylight, creating an inspiring environment for successful meetings and events.

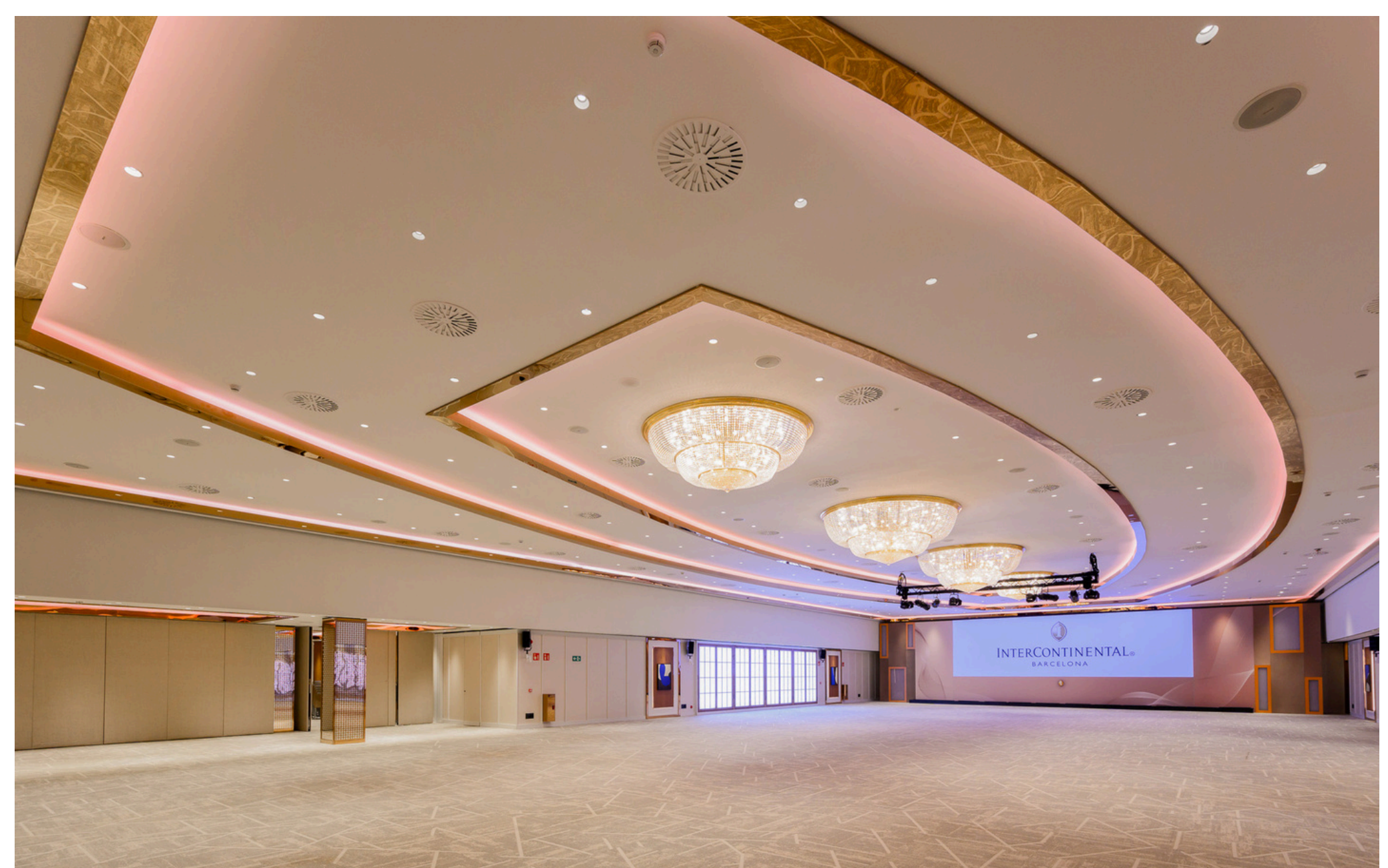
Recognized as the 6th best meeting hotel in Europe by the Cvent Top Meeting Hotels ranking, InterContinental Barcelona continues to elevate its offering.

And there's more good news: our meeting spaces have just been renewed. The Verdi Ballroom has been completely reimaged; now featuring large windows that bring brightness and elegant architectural details. Alongside the newly refreshed Rossini and Vivaldi rooms, they've become some of the most luminous and sophisticated meeting spaces in Barcelona. A new era of meetings has begun.

InterContinental Barcelona offers supreme comfort, impeccable service, leisure and meeting facilities, complemented by five restaurants and bars that offer succulent local and international cuisine. Whether seeking to indulge in haute cuisine at our signature restaurant or rejoicing in the breath-taking views of the city from our 173 Rooftop Terrace whilst sipping on a cocktail.

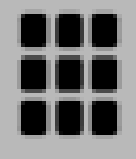
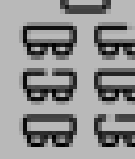



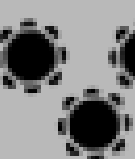
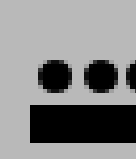

The cutting-edge Technogym equipped fitness centre, the authentic Spa retreat and the relaxing outdoor pool guarantee to replenish your body, spirit, and mind. The hotel's meeting space totals 3,000 square metres, with a capacity of 1,000 delegates in theatre style, 600 seated for a gala dinner and ample foyer space for exhibitions.

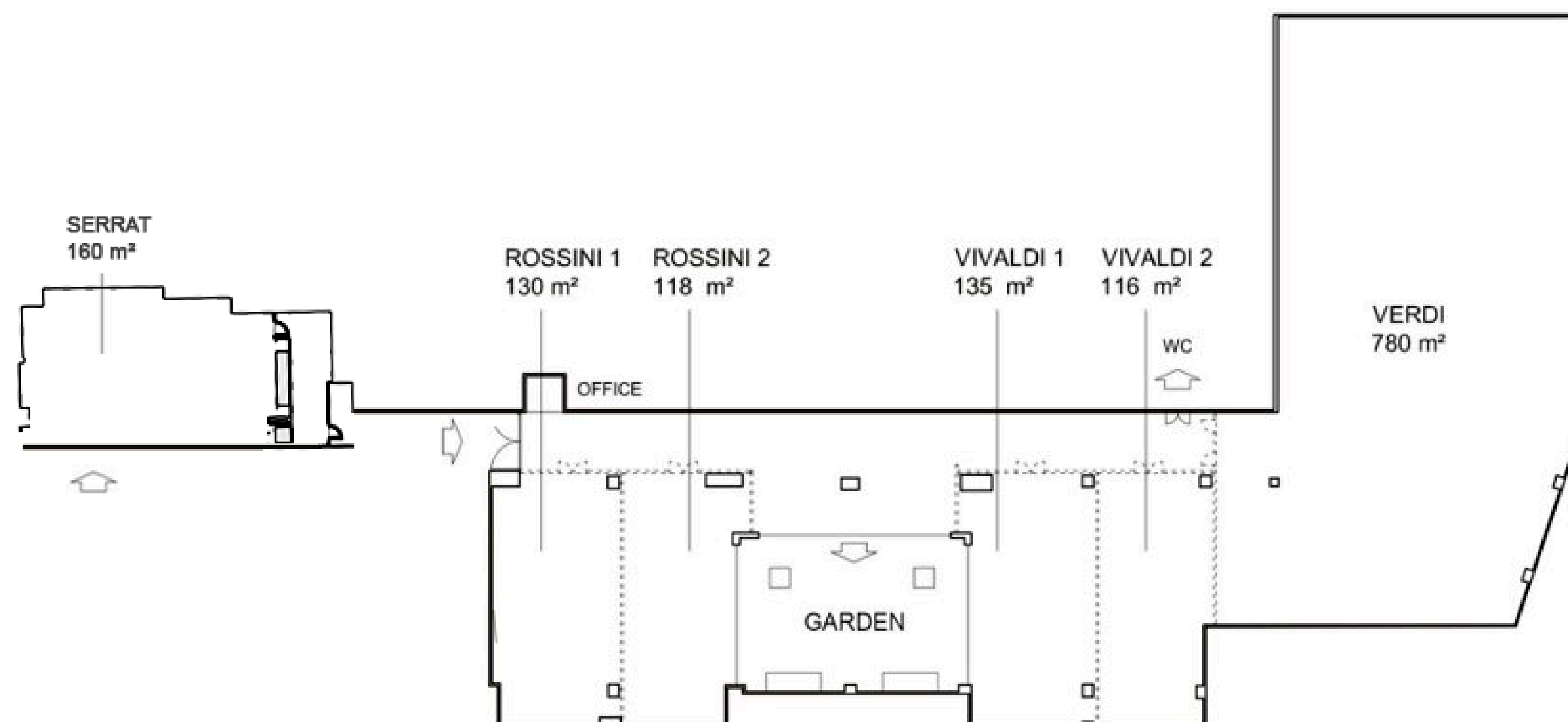
Meetings are delivered by a highly qualified team focused on understanding your needs and staging an event tailored to your every desire. Both our service and technology are designed to simplify the event planning process and enhance our ability to truly customise each event.





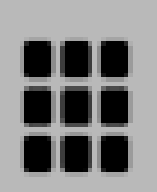
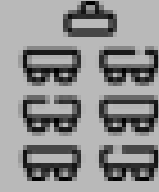

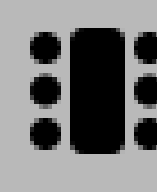
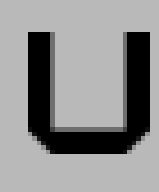
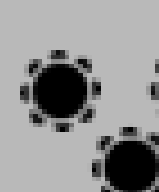
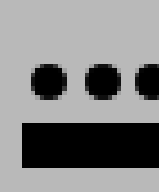

## MAIN FLOOR

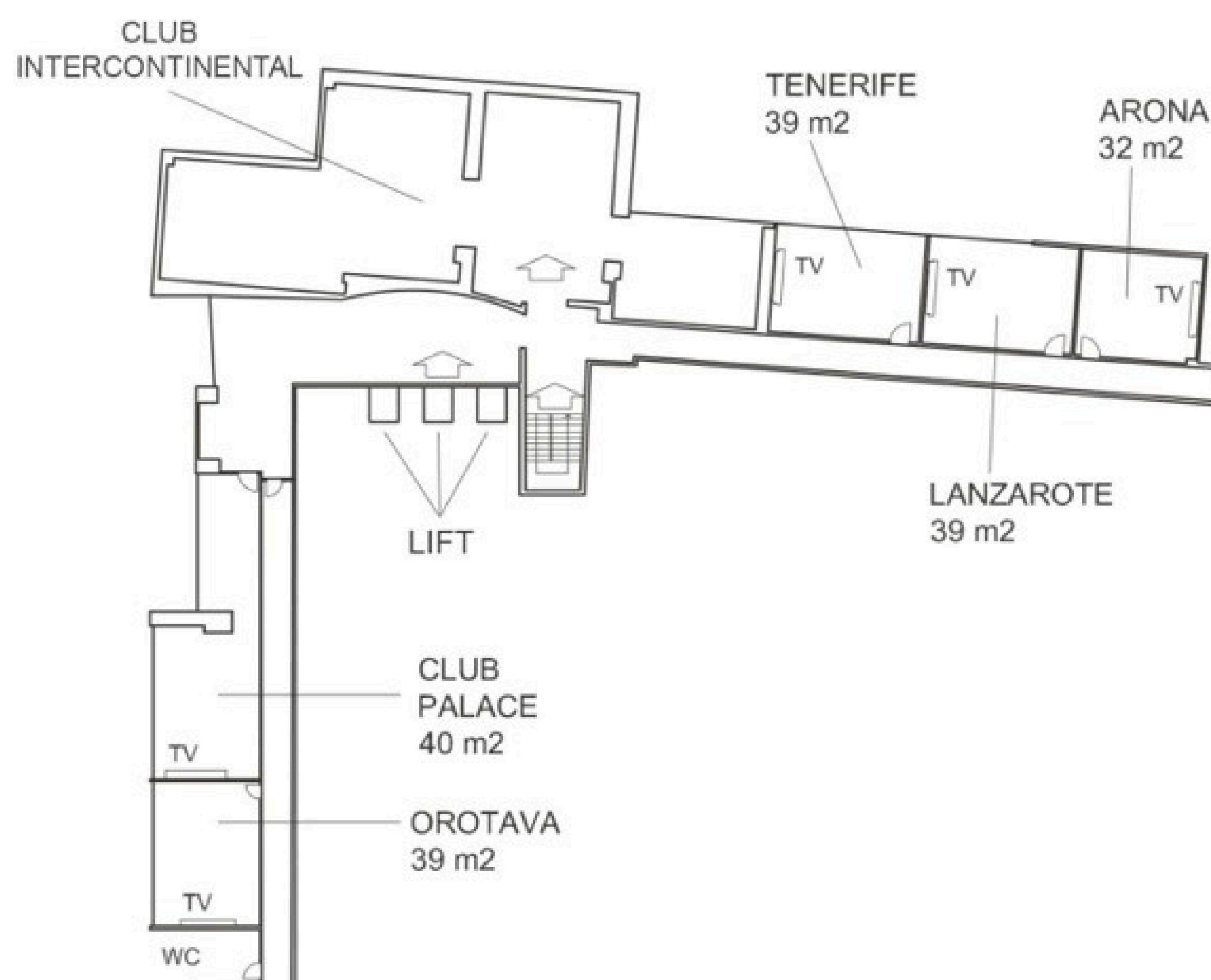
Room	Day Light	Surface (sqm)	Surface (sqf)	Dimensions (mts) L x W x H	Dimensions (Feet) L x W x H	 Theater	 Classroom	 Cabaret	 Board	 U-shape	 Banquet	 Buffet	 Cocktail Coffee Break
Verdi	scenic window	780	8395	39 x 19,4 x 5,4	128 x 63.60 x 17.50	800	400	50 tables	110	120	500	400	600
Vivaldi 1+2	Y	250	2690	16,3 x 15,3 x 3,2	53.50 x 50 x 10.30	200	120	12 tables	60	50	160	120	150
Vivaldi 1	Y	135	1248	16,3 x 8 x 3,2	53.50 x 26 x 10.30	100	75	8 tables	30	35	80	50	75
Vivaldi 2	N	116	1453	16,3 x 7,4 x 3,2	53.50 x 27.10 x 10.30	100	75	8 tables	30	35	80	50	75
Rossini 1+2	Y	250	2690	16,2 x 15,5 x 3,2	53.10 x 50 x 10.30	200	120	12 tables	60	50	160	120	150
Rossini 1	N	130	1399	16,2 x 8,3 x 3,2	10 x 27.20 x 10.30	100	75	8 tables	30	35	80	50	75
Rossini 2	Y	118	1270	16,2 x 7,2 x 3,2	53.70 x 23.60 x 10.30	100	75	8 tables	30	35	80	50	75
Sala Serrat	Y	160	1722	17,3 x 9 x 3,3	56.76 x 29.53 x 10.83	80	55	7 tables	30	36	60	60	80





## MEZANINE FLOOR

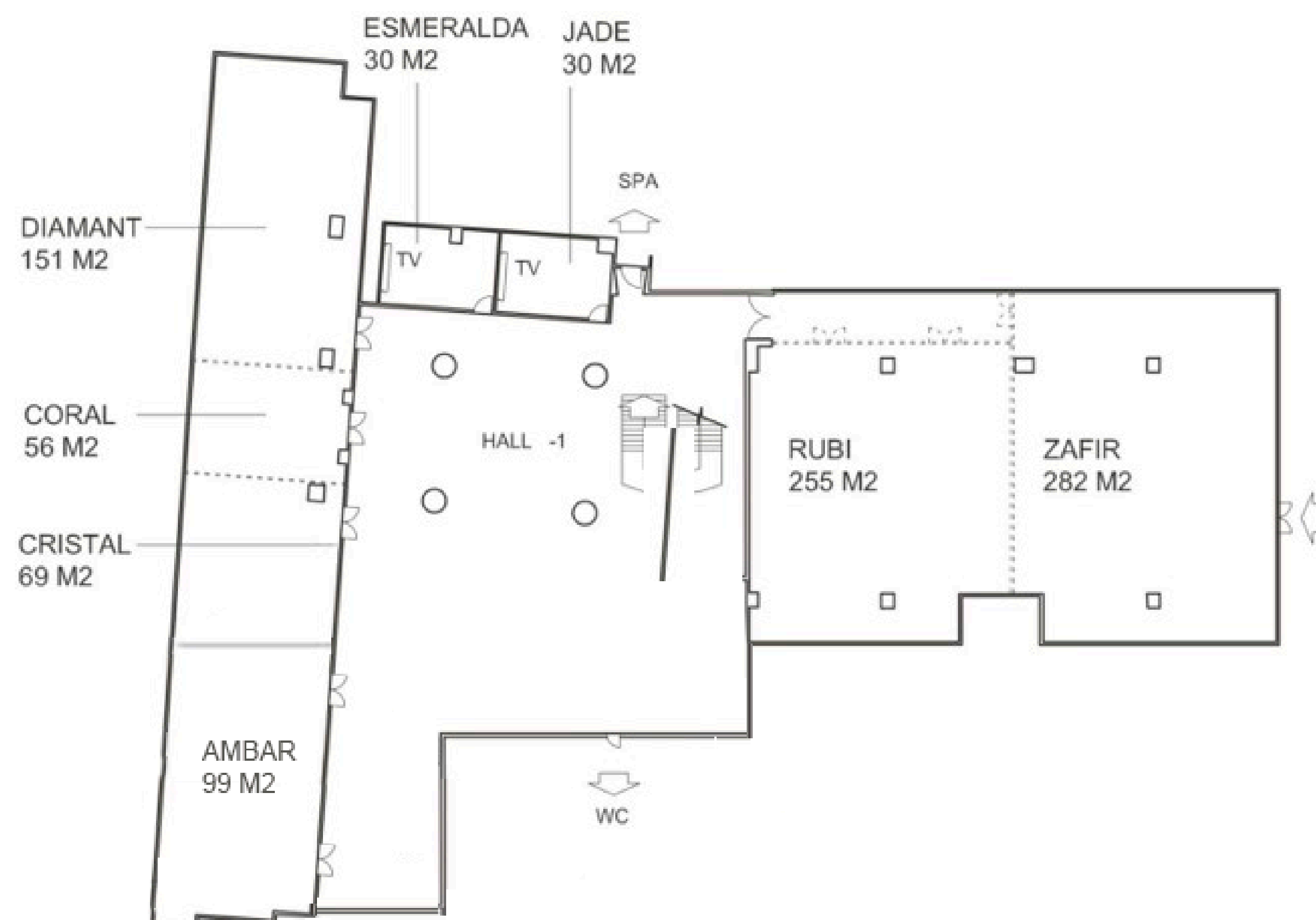
Room	Day Light	Surface (sqm)	Surface (sqf)	Dimensions (mts) L x W x H	Dimensions (Feet) L x W x H								
						Theater	Classroom	Cabaret	Board	U-shape	Banquet	Buffet	Coffee Break
Club Palace	Y	40	430	7,6 x 5,3 x 2,3	25 x 17.30 x 7.54	-	-	-	12	-	-	-	-
Orotava	Y	39	420	7,2 x 5,2 x 2,3	23.60 x 17.10 x 7.54	30	18	2 tables	12	15	-	-	20
Tenerife	Y	39	420	7,4 x 5,3 x 2,3	24.30 x 17.30 x 7.54	30	18	2 tables	12	15	-	-	20
Lanzarote	Y	39	420	7,4 x 5,3 x 2,3	24.30 x 17.30 x 7.54	30	18	2 tables	12	15	-	-	20
Arona	N	32	344	6 x 5,3 x 2,3	20 x 17.30 x 7.54	20	12	1 table	12	15	-	-	15





## GEMSTONES FLOOR

Room	Day Light	Surface (sqm)	Surface (sqf)	Dimensions (mts) L x W x H	Dimensions (Feet) L x W x H								
						Theater	Classroom	Cabaret	Board	U-shape	Banquet	Buffet	Cocktail Coffee Break
Zafir	N	282	3035	19,9 x 14,9 x 2,9	65.30 x 49.50	200	120	18 tables	45	50	180	160	200
Rubi + Zafir	N	537	5780	29,8 x 16,9 x 2,9	97.70 x 55.40 x 9.50	400	250	35 tables	90	90	400	300	500
Diamant	N	151	1625	17,3 x 9,1 x 3	56.80 x 29.70 x 9.80	100	90	10 tables	42	48	100	80	100
Coral	N	56	603	6,3 x 9,1 x 3	20.60 x 29.70 x 9.80	30	20	4 tables	20	23	40	30	40
Diamant + Coral	N	207	2228	22,6 x 9,1 x 3	74.60 x 29.70 x 9.80	130	110	14 tables	60	66	140	120	160
Cristal	N	69	743	8,4 x 9,1 x 3	27.60 x 29.70 x 9.80	40	30	5 tables	20	24	50	40	50
Coral + Cristal	N	125	1345	14,7 x 9,1 x 3	48.30 x 29.70 x 9.80	70	50	9 tables	30	36	90	80	100
Diamant + Coral+Cristal	N	276	2970	32 x 9,6 x 3	105 x 29.70 x 9.80	170	150	19 tables	70	80	200	180	250
Jade	N	30	323	6,5 x 4,6 x 2	21.30 x 15 x 7.50	16	9	1 table	12	15	-	-	15
Esmeralda	N	30	323	6,5 x 4,6 x 2,3	21.30 x 15 x 7.50	16	9	1 table	12	15	-	-	15
Rubi	N	255	2745	16,9 x 14,8 x 2,9	55.40 x 48.60 x 9.50	200	120	16 tables	45	50	140	160	180
Ambar	N	75	800	9,20 x 8,08 x 3	30.18 x 26.51 x 9.80	80	70	9 tables	40	40	90	90	90





INTERCONTINENTAL®  
BARCELONA



InterContinental® Barcelona  
Avenida de Rius i Taulet, 1-3 (08004 Barcelona)  
[groups@icbarcelona.com](mailto:groups@icbarcelona.com)